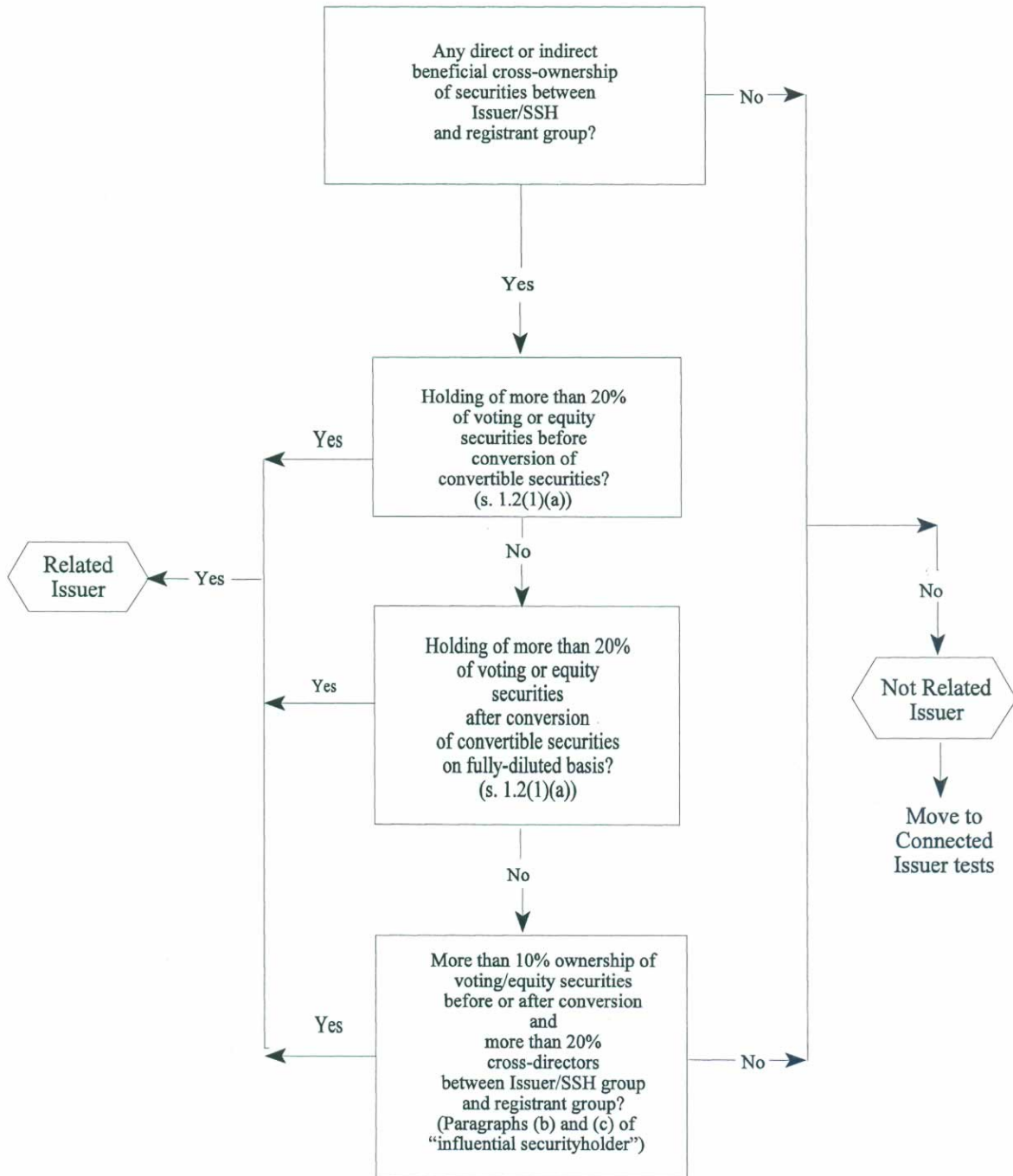


**COMPANION POLICY 33-105CP
TO NATIONAL INSTRUMENT 33-105**

**APPENDIX A-1
RELATED ISSUER**

Relevant provisions: s.1.1: "influential securityholder" & s.1.2(1), (2)

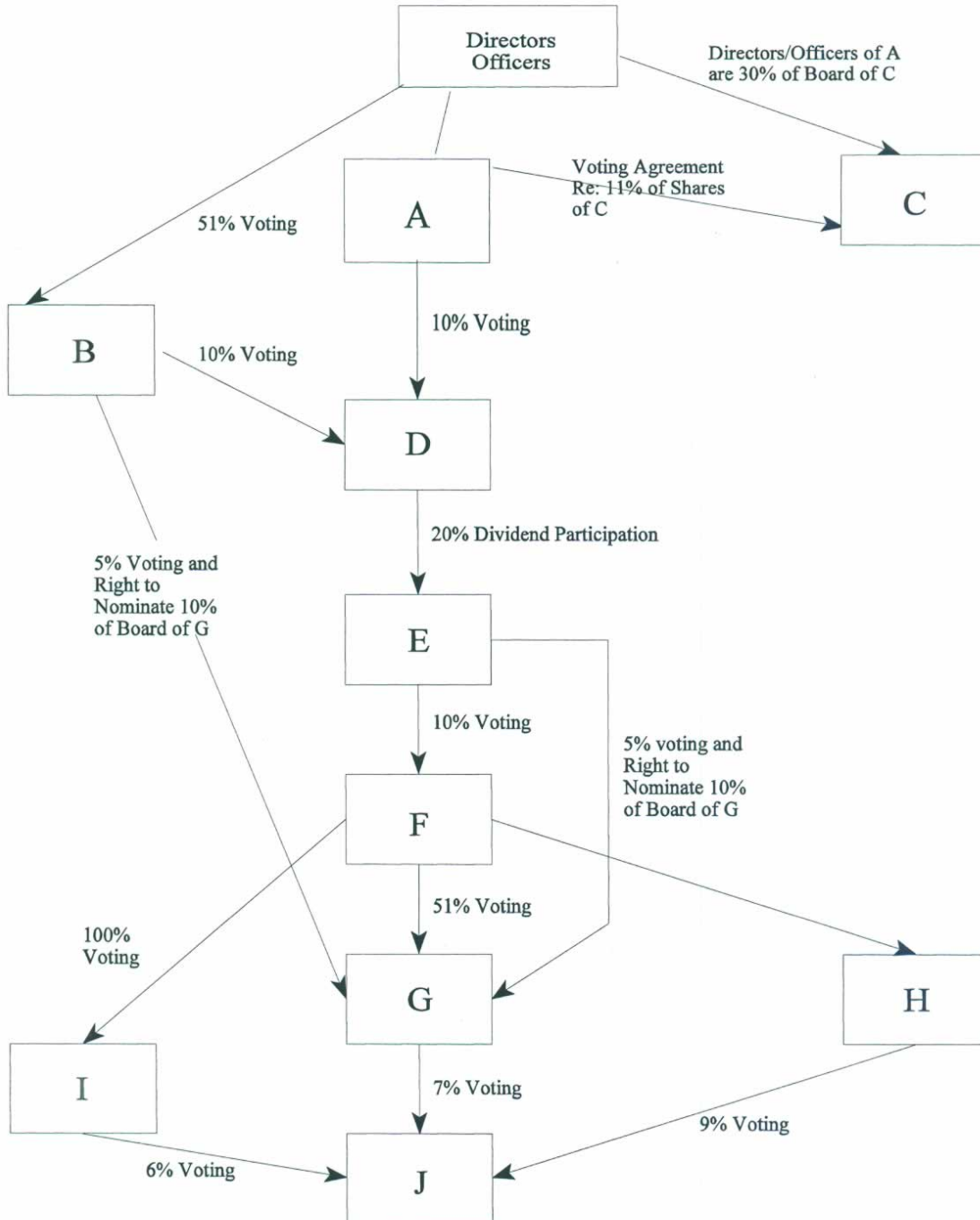


**COMPANION POLICY 33-105CP
TO NATIONAL INSTRUMENT 33-105**

APPENDIX A-2

RELATED ISSUER - INFLUENTIAL SECURITYHOLDER

All of A-J are Related Issuers of Each Other
Relevant provisions: s. 1.1: "influential securityholder" & s.1.2(1), (2)

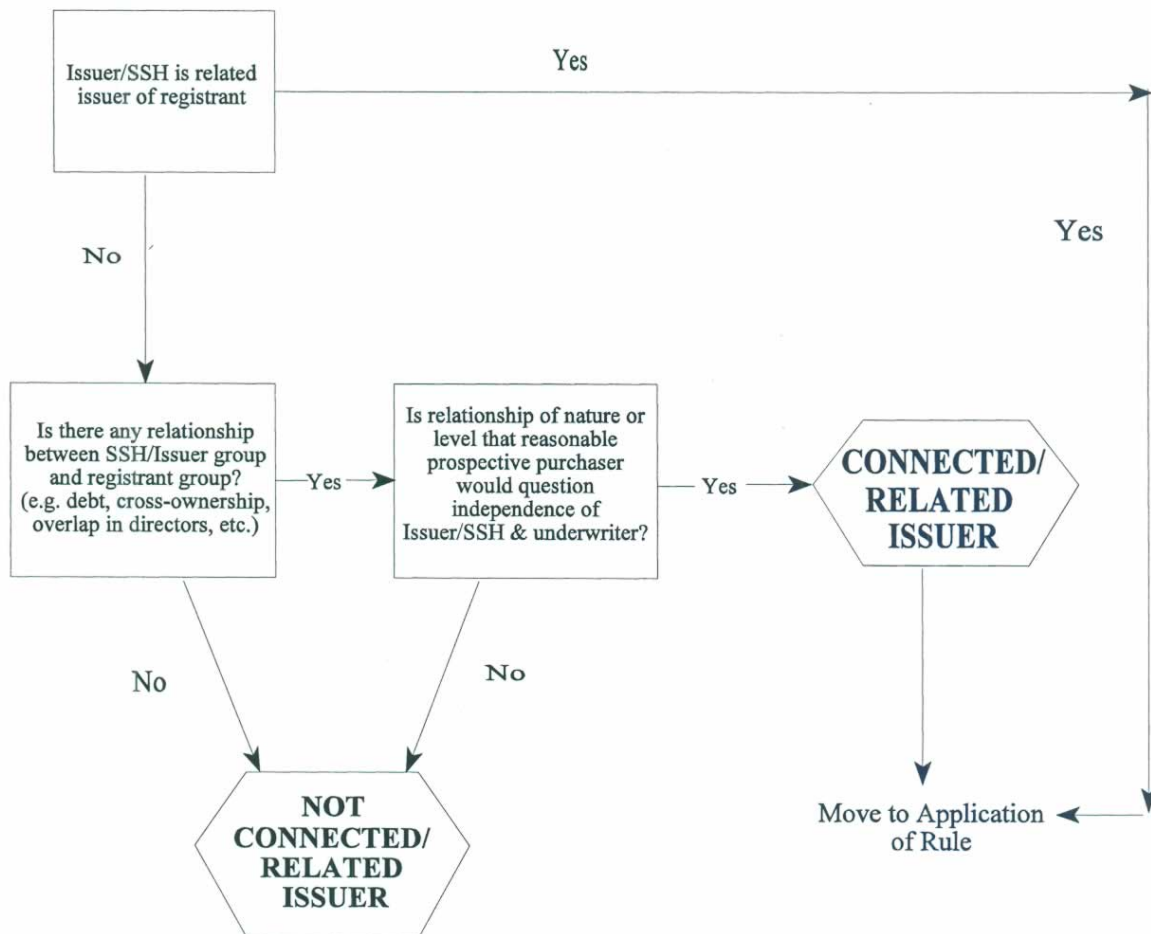


**COMPANION POLICY 33-105CP
TO NATIONAL INSTRUMENT 33-105**

APPENDIX A-3

CONNECTED/RELATED ISSUER

Relevant provisions: s.1.1: "connected issuer"



COMPANION POLICY 33-105CP
TO NATIONAL INSTRUMENT 33-105

APPENDIX A-4

APPLICATION OF RULE

